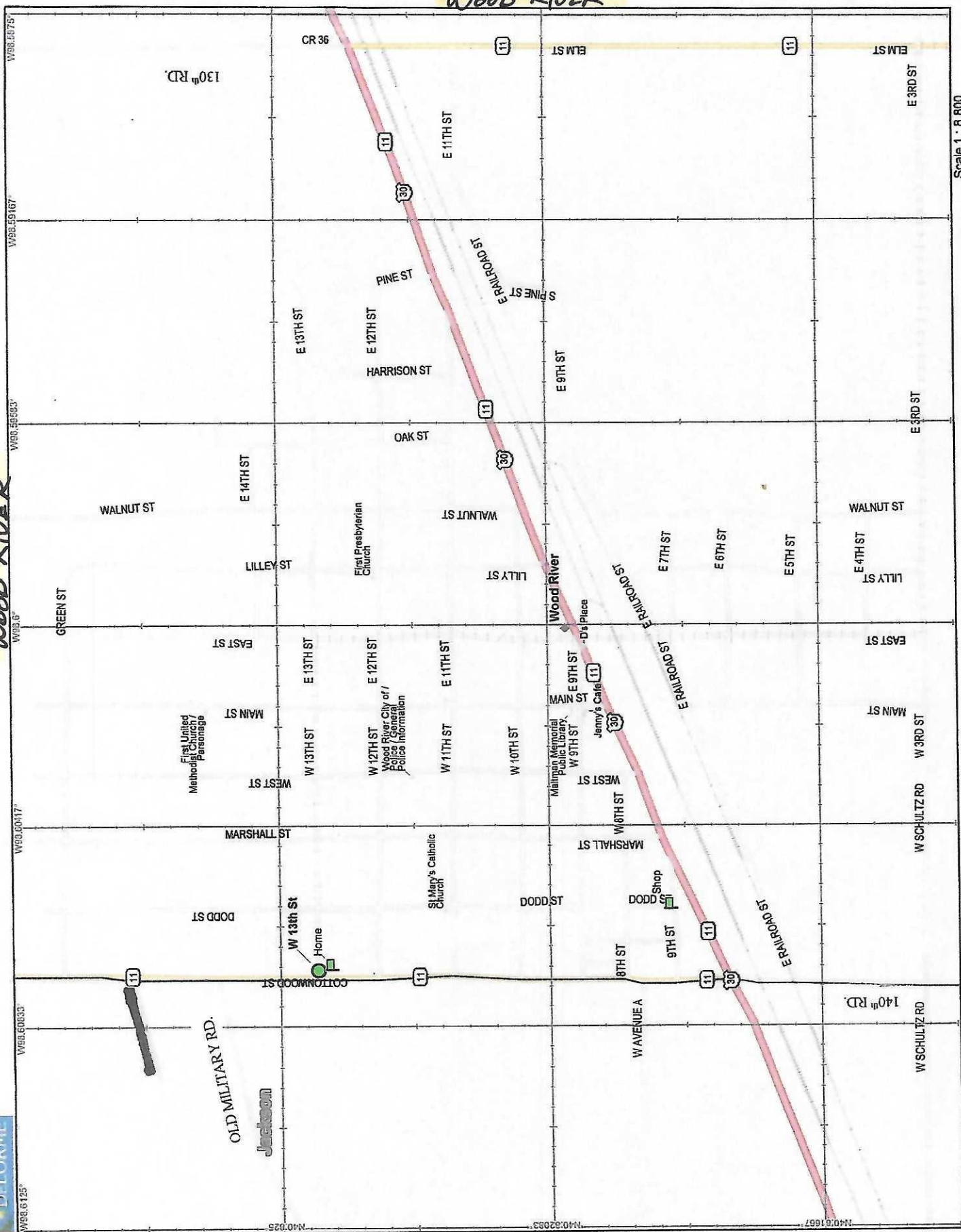


# TABLE OF CONTENT

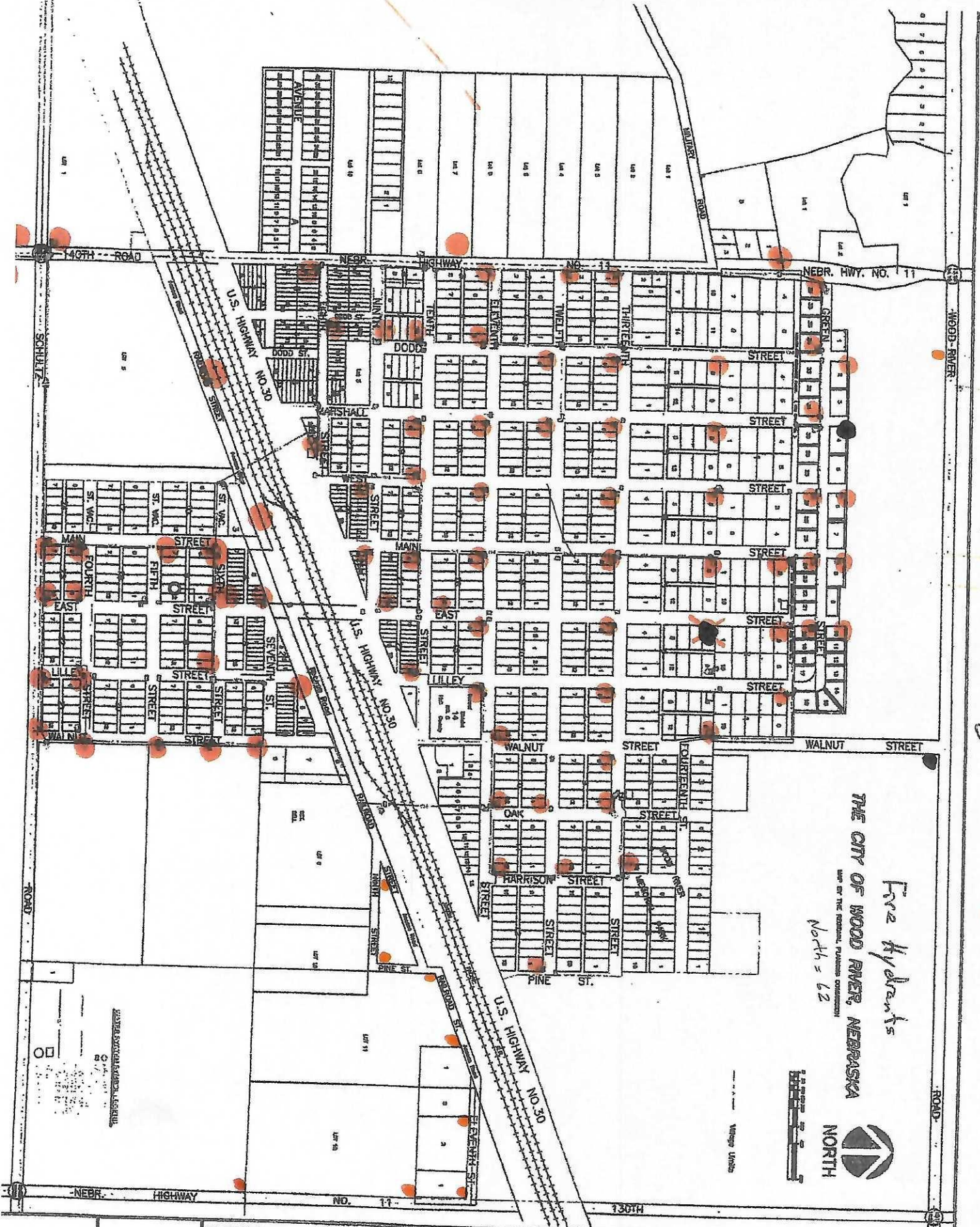
2	City of Wood River
3	City Fire Hydrants
4	Hall County Map
5	Overland Trail Oasis (1413 Main St)
6	Country Side Villa (1415 Main St)
7	Country Side Villa (1416 East St)
8	Wood River High & Middle School (Wood River Rd)
9	Elementary School (1003 Lilley St)
10	Trailer Court (West Side of Town - Packers)
11	Trailer Court (East Side of Town - Packers)
12	Trailer Court (East Side of Town)
13	Alda Map
14	Cairo Map
15	Amick Acres - Doniphan
16	Doniphan Map
17	Shelton Map
18	Howard County Map





Fire Hydrant Painting

● = F.H. to paint ~~2018~~ 2019



Fire Hydrants

THE CITY OF WOOD RIVER, NEBRASKA

MAP OF THE TOWN OF WOOD RIVER, NEBRASKA

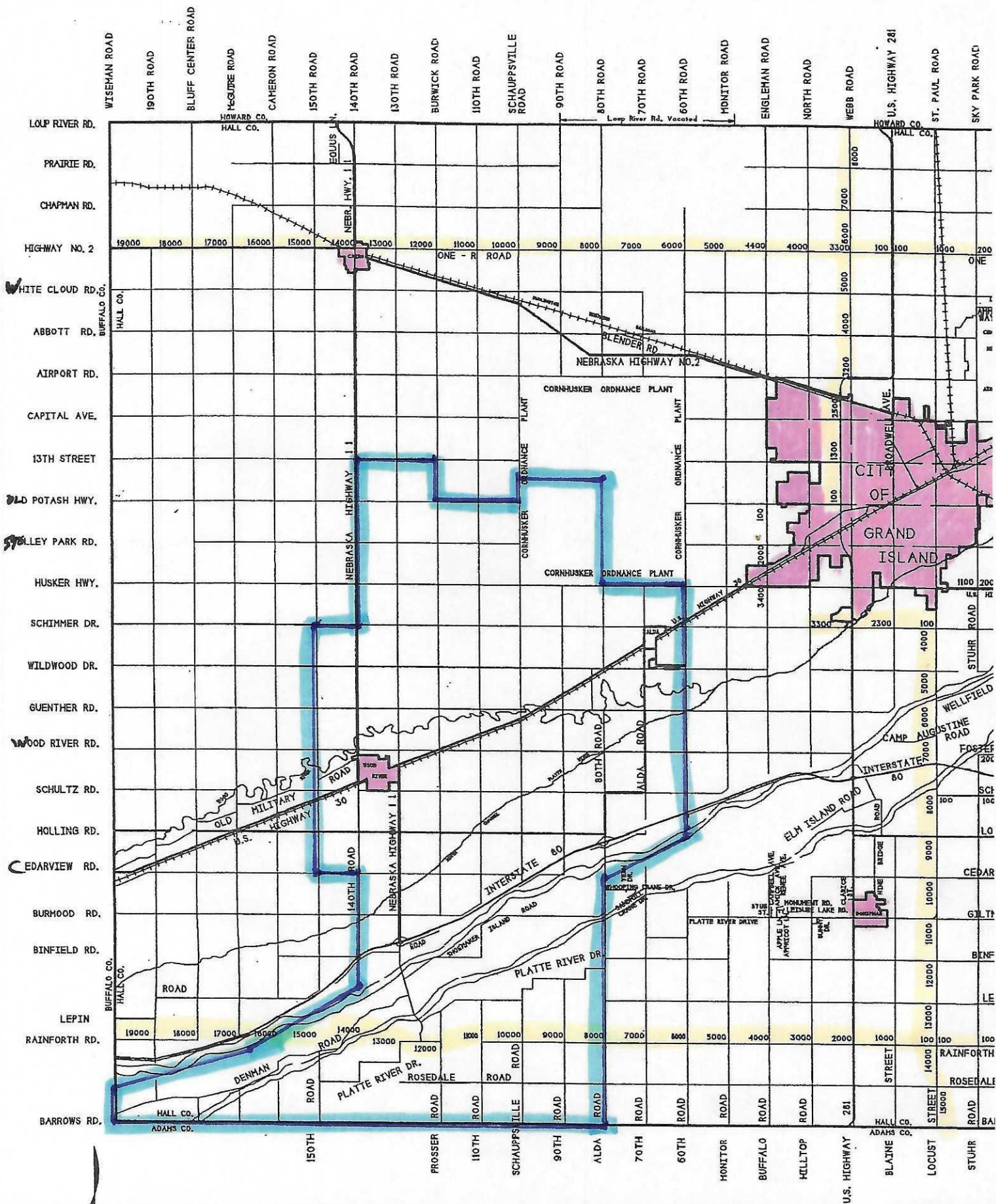
North = 62



WDA

WOOD RIVER  
UTILITY MAP  
WOOD RIVER, NEBRASKA





# HALL COUNTY ROAD MAP

East St.



# Overland Trail Oasis

## 1413 Main St.

STAPLES®

# 107	# 108
# 106	# 105

# 111	# 112
# 110	# 109

# 103	# 104
# 102	# 101

# 115	# 116
# 114	# 113

	Community room
	Office

# 119	# 120
# 118	# 117

Main St.



# Country Side Villa



1415 Main St.

Green St.



# 102

# 104

Driveway

# 101

# 103



Main St.

# Country Side Villa



1416 East St.

Green St.



# 106

# 108

# 110

# 112

Driveway

# 105

# 107

# 109

# 111

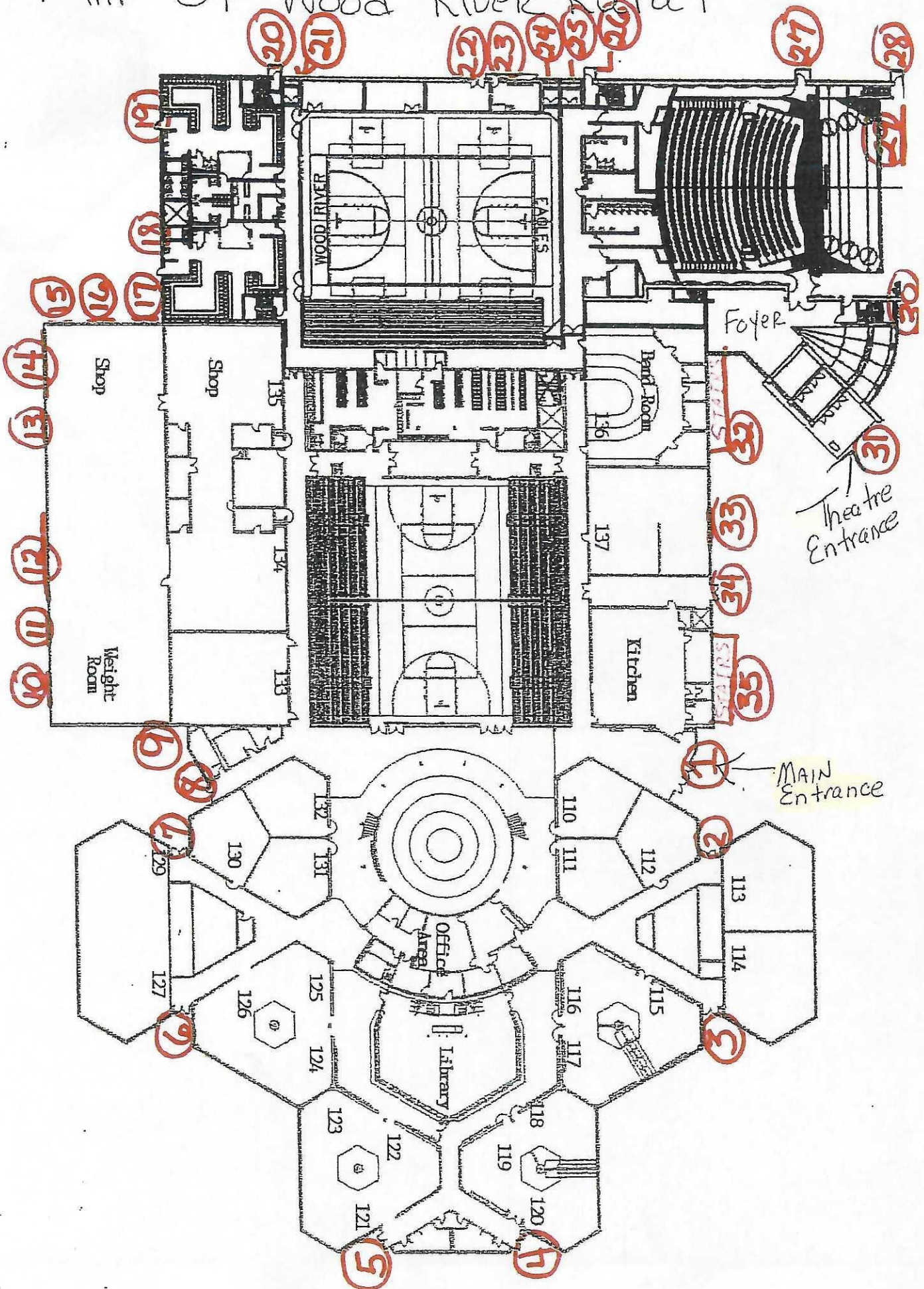


East St.

WRRSD Middle & High School

13800 WEST WOOD RIVER ROAD, WOOD RIVER, NE.

MAP of Wood River Rural



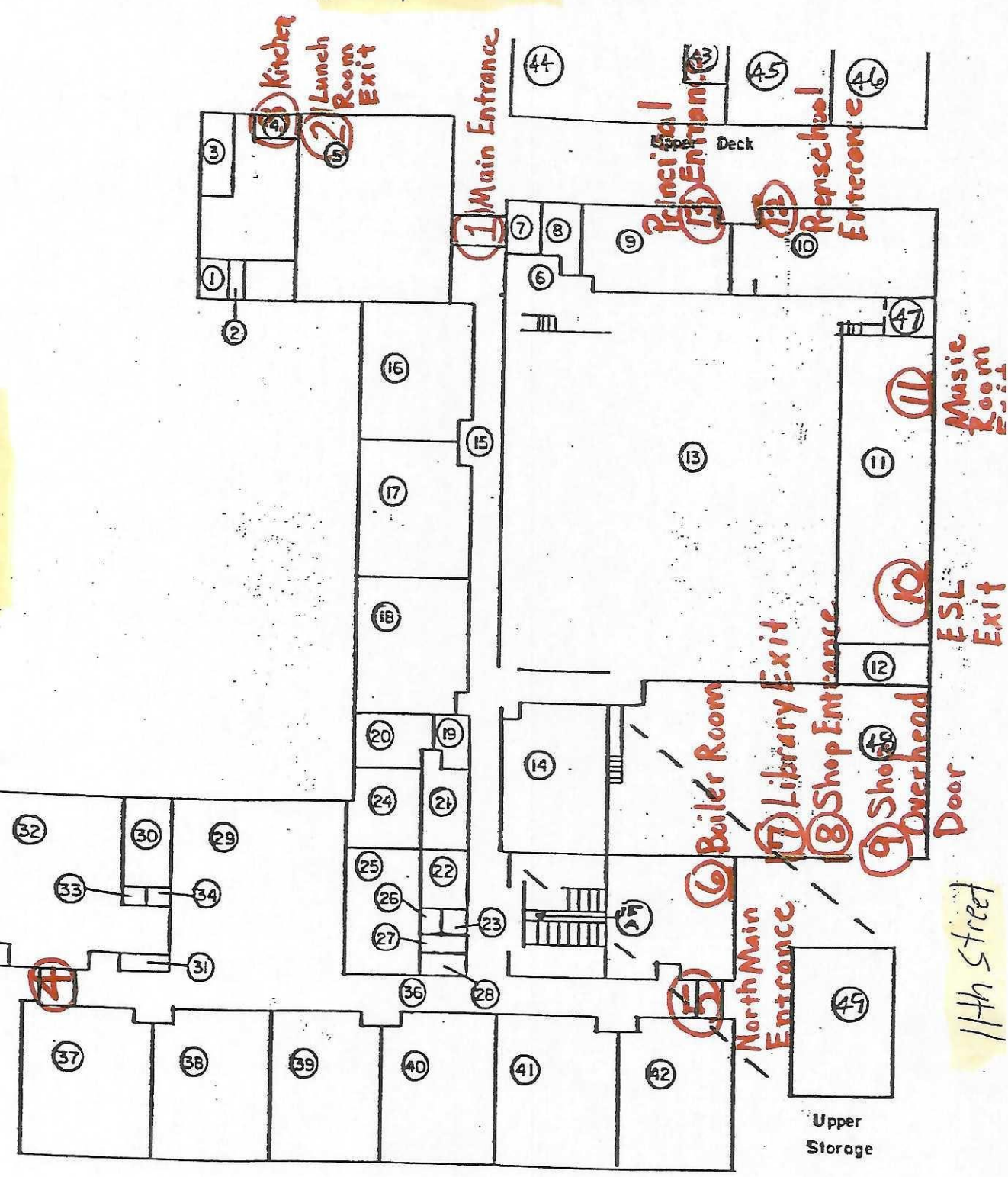


WOOD RIVER ELEMENTARY SCHOOL  
1063 LILLEY ST., WOOD RIVER, NE

10th Street

Lilley Street

South Main Entrance



Door

11th Street

Walnut Street

WOOD RIVER ELEMENTARY SCHOOL

9th ST.

HWY 11

# 2

# 2 1/2

# 3

# 4

# 5

# 6

# 7

# 1

House

# 15

# 14

# 13

# 12

Driveway

8Th ST.

415 W. 8th St

House

# 8

# 9

# 10

# 11

PACKERS  
TRAILER PARK

# 16

DRIVEWAY



# PACKERS TRAILER PARK



EAST 13TH ST

# 16

# 15

# 14

# 13

# 12

# 11

# 10

# 9

# 1

# 2

# 3

# 4

# 5

# 6

# 7

# 8

EAST 12TH ST.

HARRISON ST.

400 E. 13TH ST.



13TH ST.

# 1

# 2

DRIVEWAY

# 6

# 5

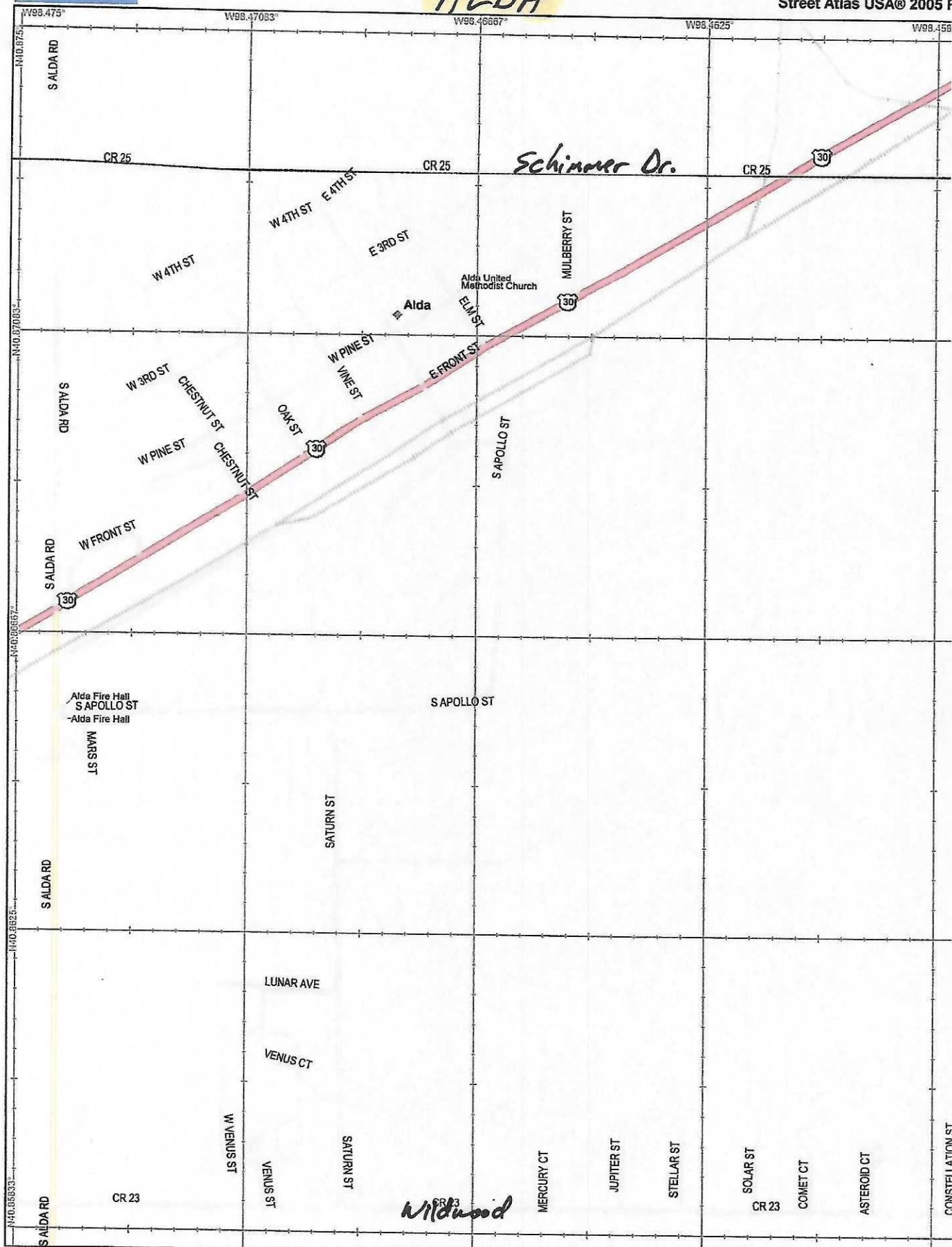
# 4

# 3

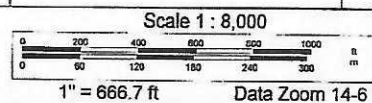
OAK ST.

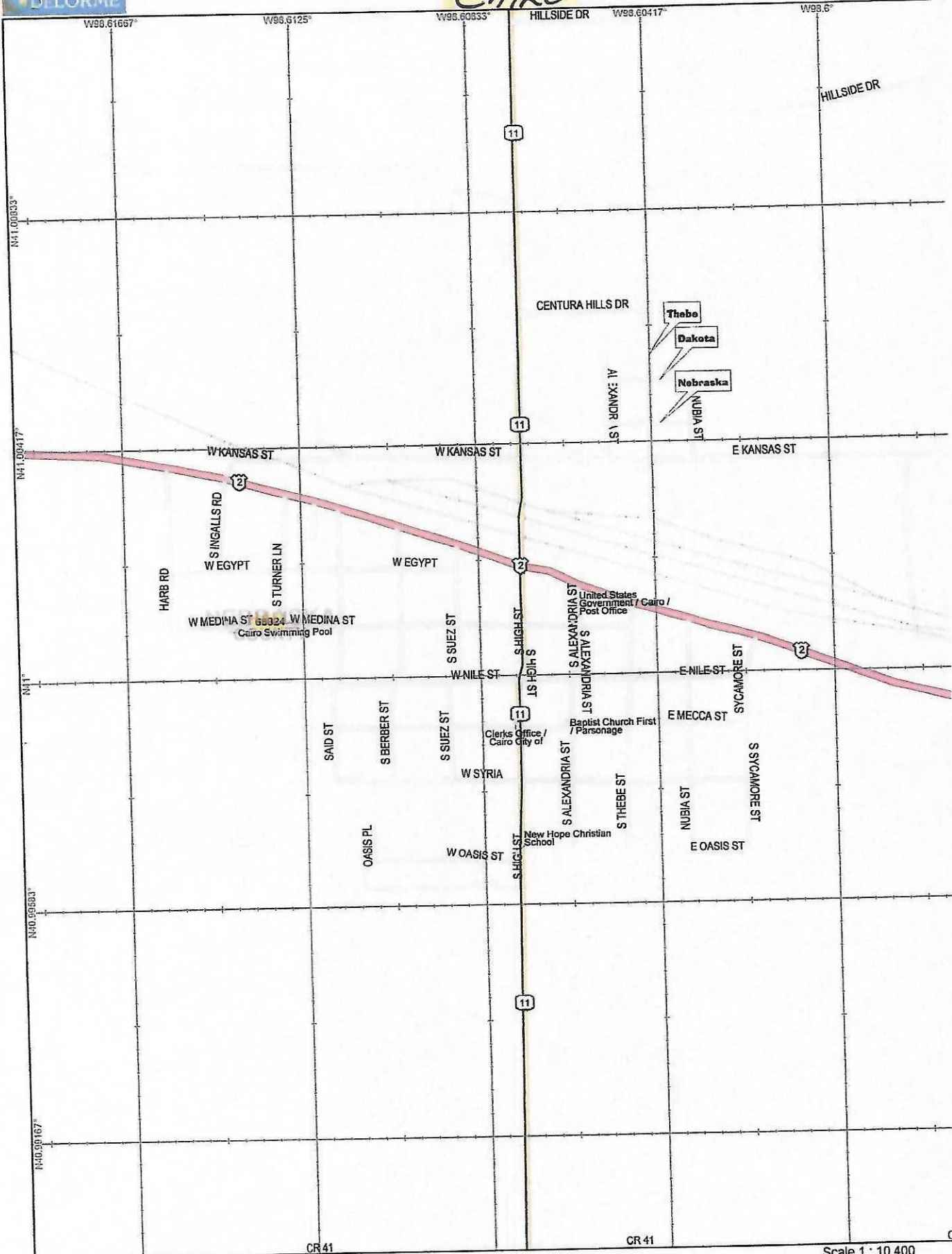
ALLEY





Data use subject to license.  
 © 2004 DeLorme. Street Atlas USA® 2005 Plus.  
 www.delorme.com



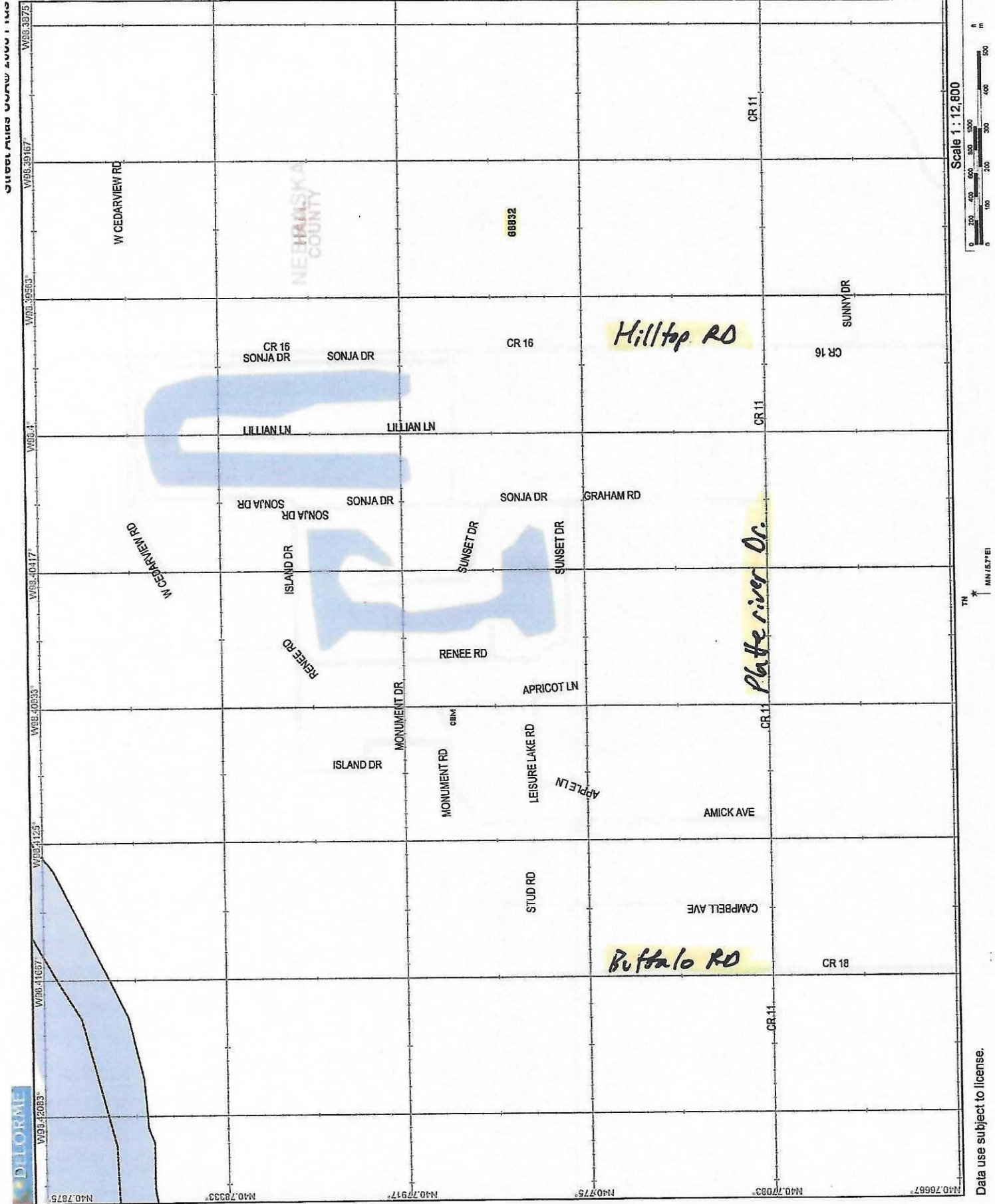


Data use subject to license.  
 © 2004 DeLorme. Street Atlas USA® 2005 Plus.  
 www.delorme.com

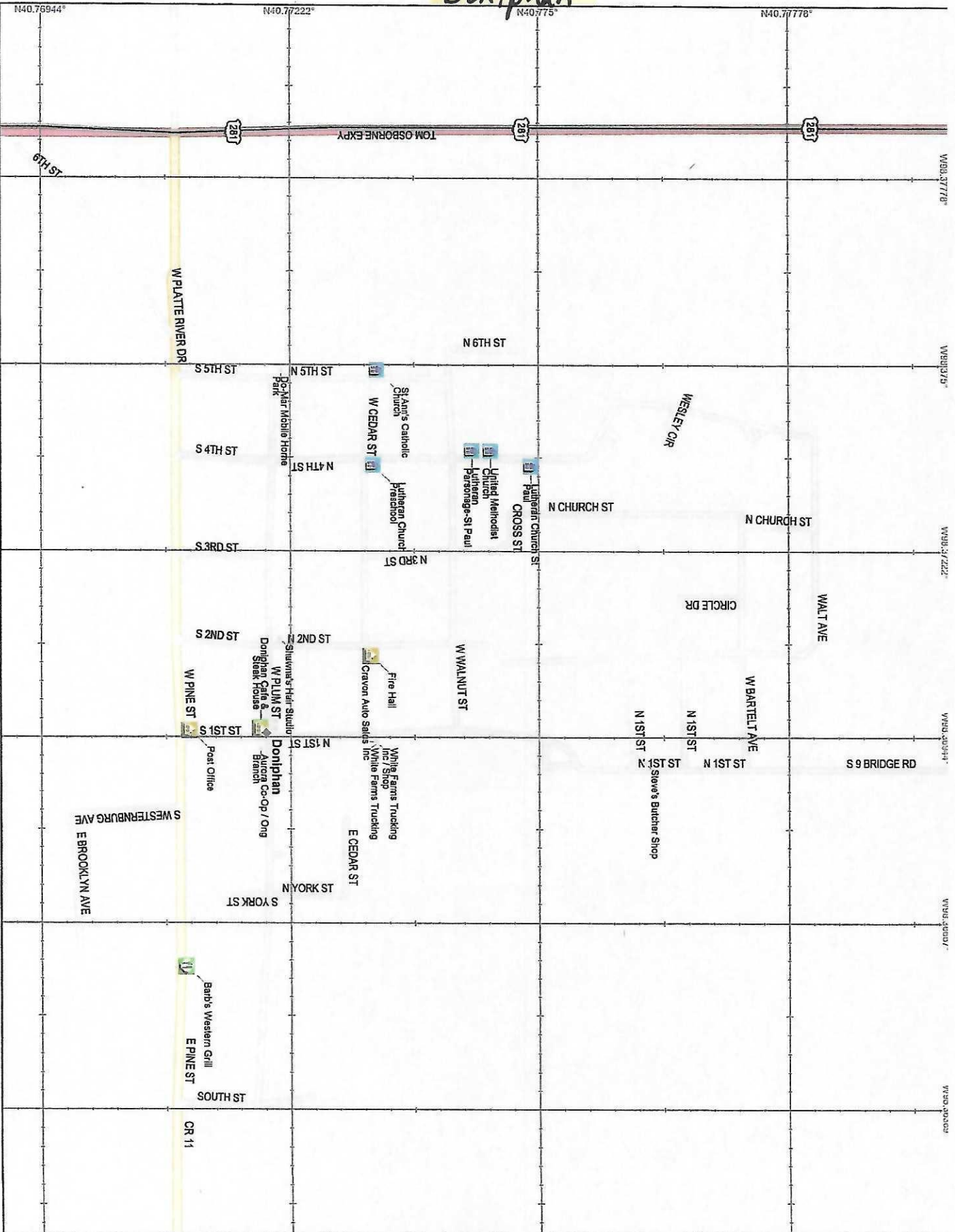
TN  
 MN (5.9°E)  
 A

Scale 1 : 10,400  
 0 200 400 600 800 1000  
 0 80 160 240 320 400  
 1" = 866.7 ft Data Zoom

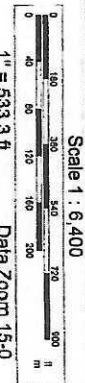


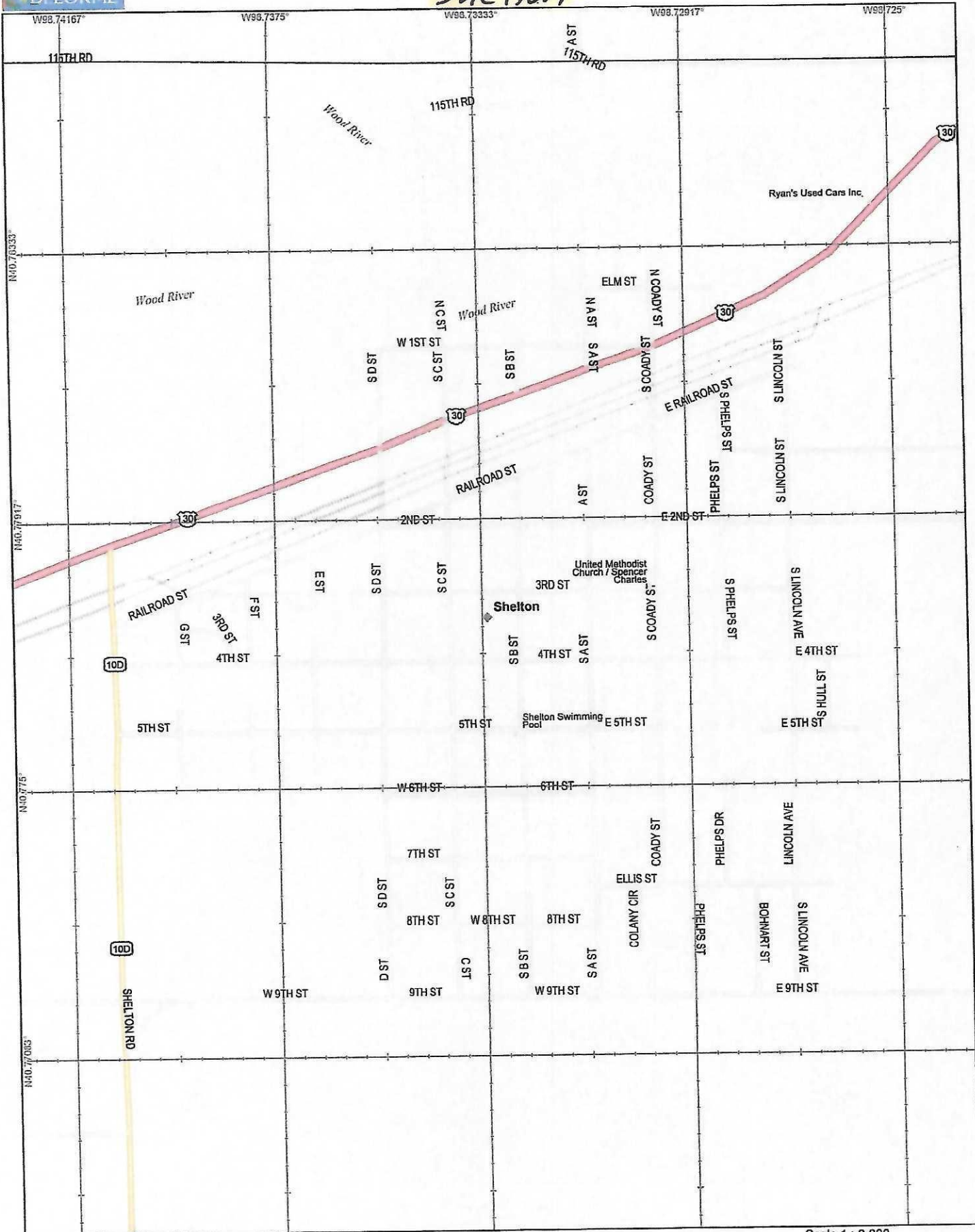


Doniphan



Data use subject to license.  
 © 2004 DeLorme, Street Atlas USA® 2005 Plus.  
 www.delorme.com



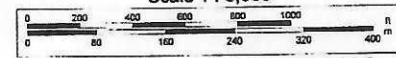


Data use subject to license.

©2004 DeLorme. Street Atlas USA® 2005 Plus.  
www.delorme.com

Map of the study area showing the location of the study site (A) relative to the town of TN and the MN (6.0°E) line.

Scale 1 : 8,800


$$1'' = 733.3 \text{ ft}$$

### Data Zoom 14-5



# HOWARD County



SIAPLES®

